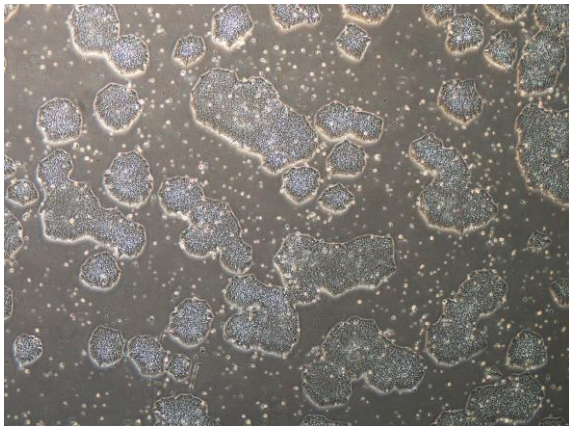


## 【 CiRA-j-1616 】 Morphology of iPSC colonies

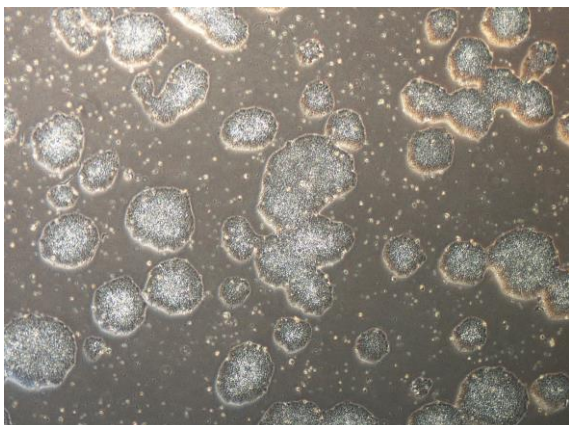
CiRA-j-1616-A: passage-3



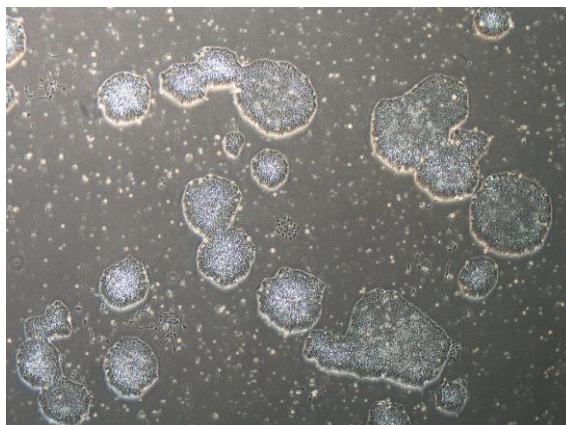
CiRA-j-1616-B: passage-3



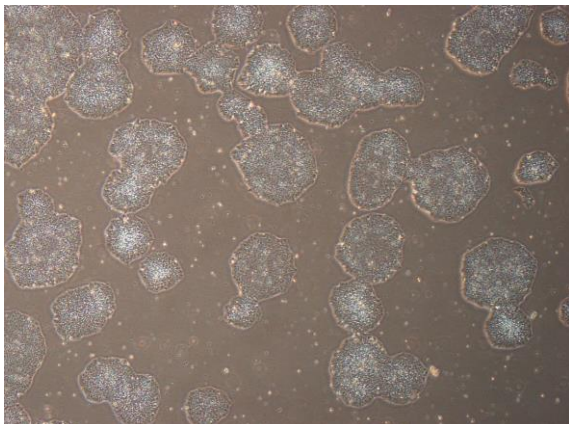
CiRA-j-1616-C: passage-3



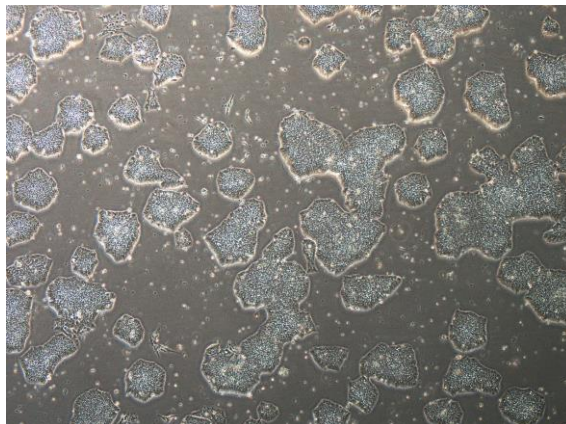
CiRA-j-1616-D: passage-3



CiRA-j-1616-E: passage-3



CiRA-j-1616-F: passage-3



( All images were captured at 4x magnification )